

#ConnectedWater, water home automation

For smarter management  
your water consumption

[my-water-manager.com](http://my-water-manager.com)

 My Water  
Manager





## #ConnectedWater, home automation for water

The waste of water on the planet today is a real issue. My Water Manager brings you the solution for eco-responsible and economical consumption in your everyday life.

As part of the intelligent home, home automation is present, indeed omnipresent, in everyday life. Blinds, shutters, heating and gates can all be controlled at your fingertips, for the comfort of all, whether you're an individual or a professional...

**Water will undoubtedly be the issue of tomorrow, the issue of the next 30 years.**

However, one crucial element has been missing until now: connected water management.



The My Water Manager team has imagined and developed a home automation solution that will enable us all, thanks to an IOS or Android application, to intervene in real time and cut off the water supply remotely using your Smartphone, tablet or PC. The operating principle is based on the system's inter-connectivity; more specifically, these modules are connected to a box, enabling us to pilot, control, manage and optimize our water consumption.

It has taken our R&D team 5 years to come up with a solution to tomorrow's ecological, environmental and eco-responsible challenges. This is a true technological revolution and an innovation without equal to date.

The whole of the My Water Manager team remains mobilized, and more specifically our Hotline, to answer your questions and guide you towards controlled, optimized and well-considered consumption. My Water Manager®: home automation for water.



Controlling water consumption

Secure your sanitary installations

Eco-domotics of water

Easy application in real time



Our solution is based on system interconnectivity: the modules are connected to a box, enabling water consumption to be controlled, monitored and optimized.

Up to 25% water savings!

### Operation system

The system is based on several self-contained, interconnected modules, strategically placed in the sanitary installation.

Each module continuously monitors water flow and temperature, and is equipped with a motorized valve.

These modules communicate in real time via radio signals with the My Water Manager© box.

Each box is connected to the Internet via a Wifi or Ethernet link.

### Intelligent water leak detection

Algorithms designed by our R&D team are able to detect leaks and their sources thanks to communication between modules.

All information and alerts are instantly transmitted to users. The system can intervene automatically to correct the leak, or leave the choice to the user, guaranteeing optimum safety.

My Water Manager© offers an effective, space-saving and easy-to-install solution for monitoring your sanitary installations.

### Ecological, economical, eco-responsible

My Water Manager© promotes responsible water use to preserve this essential resource. The intuitive application offers simple, effective control of the sanitary installation.

Users can easily cut off or restrict water flow from their smartphone, tablet or PC. They can also monitor their consumption in real time and take steps to reduce it.



#ConnectedWater  
Remote water management kits developed by My Water Manager.

A: Module connected to domestic hot and cold water pipes.

B: The box is the brain of the system. It manages the information and sends it to the application.

- High-performance home automation for water management
- Professionals or individuals
- Monitoring and management of all your sanitary installations
- Prevention and management of risks and water consumption
- Sustainable water management and saving
- An application dedicated to water management
- Preserving our water resources



FOR PROFESSIONALS



Social and real estate lessors, Residences, Offices



Hotel, B&B, campsites



Hospitals & retirement homes



Community hall, school, high school, gymnasium, swimming pool, stadium, museum



Industries SME – SMI Tertiary



Shops Shopping mall & Restaurants

#ConnectedWater, home automation for water, is a unique and innovative solution for both professionals and private individuals, designed for economical, preventive and ecological water management.



FOR INDIVIDUALS



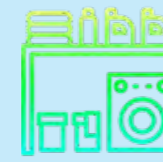
Bathroom



Hot water tank



Kitchen



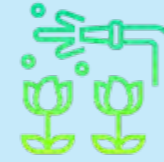
Laundry



Toilet



Poll



Garden

Who's it for?  
For professionals and private individuals alike, who want to manage water economically and ecologically

Control, optimise, manage and cut off the water to all the equipment making up your sanitary installations directly via an application.

The operating principle is based on interconnected modules placed at strategic points in the installation, providing complete control of your sanitary installation.

Be alerted to the slightest leak... Whether you're a business or a private individual, My Water Manager© is the solution for you.



up to  
-25%  
savings  
water  
and  
budget !

Monitor your water consumption

Managing your sanitary installations

Prevent the risk of water damage and invisible micro-leaks

Optimising consumption

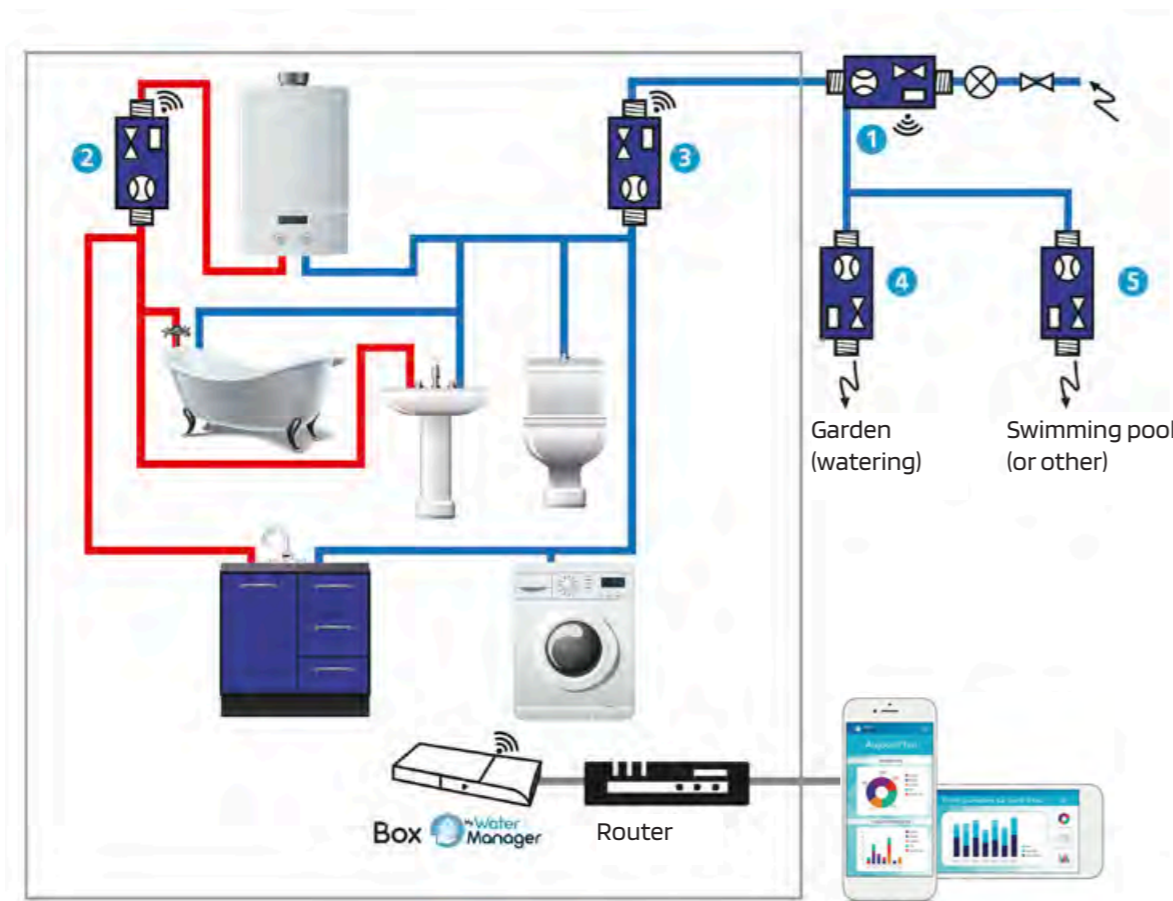


The system is completely modular and can be adapted to suit your configuration, with the option of zoning.

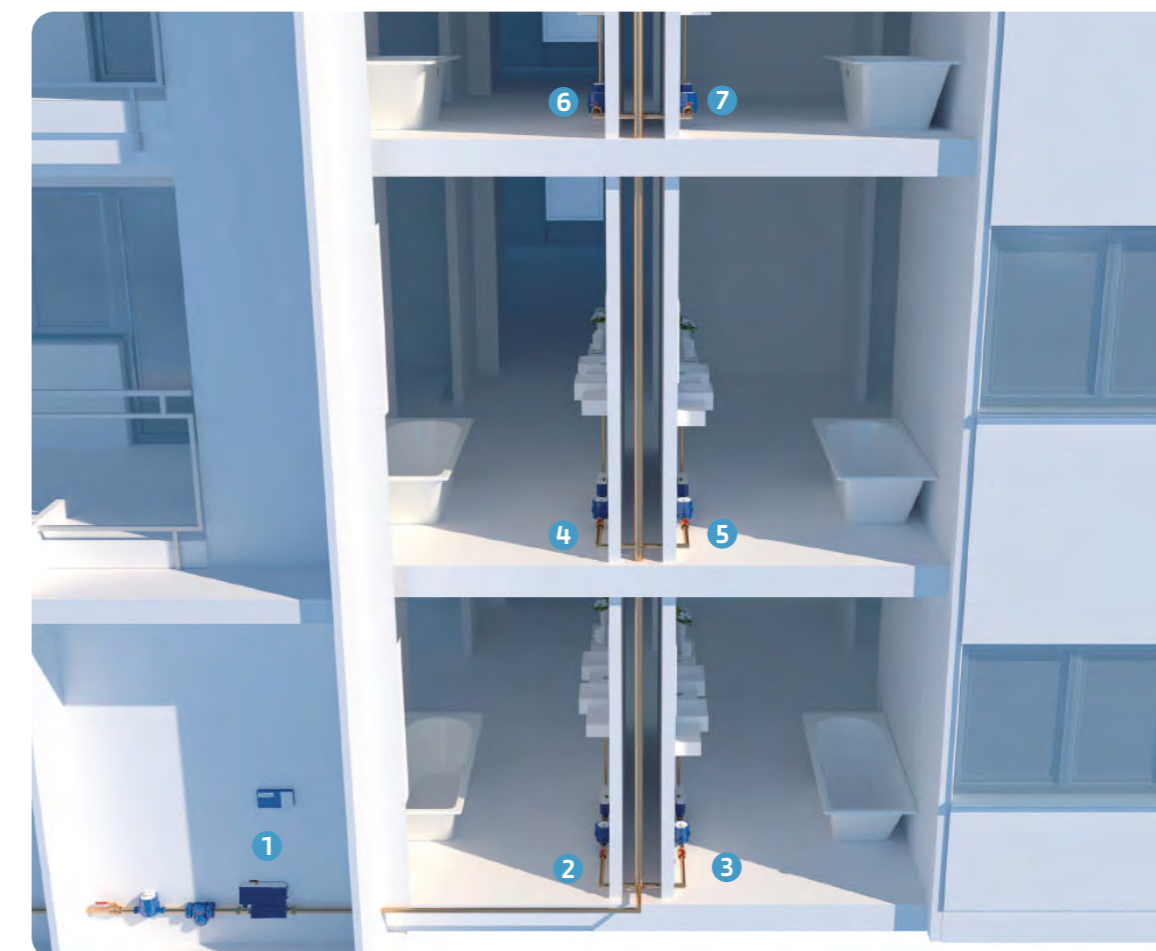
- 1 - Main water inlet
- 2 - General hot water
- 3 - General cold water
- 4 - Outflow to garden
- 5 - Outflow to swimming pool



Example of installation with 1 Box + 5 Modules suitable for most home configurations



Example of installation for a lessor 1 Box + 7 Modules suitable for most professional configurations



The system is completely modular and can be adapted to suit your configuration and business use, with the option of zoning in rooms requiring more attention.

- 1- Main water inlet
- 2 - Lodging 1
- 3 - Lodging 2
- 4 - Lodging 3
- 5 - Dwelling 4
- 6 - Dwelling 5
- 7 - Accommodation 6

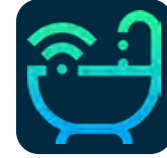
What are the advantages of our solution for reasoned and preventive management?



## Controlling your Water consumption

### Thanks to the application, you can :

- Redefine your daily habits,
- Identify your over-consuming equipment,
- Adopt eco-responsible consumption thanks to our educational and interactive tool
- Analyse your consumption by exporting data.
- Control your consumption costs



## Secure your Sanitary installations

### Zoning

Modules installed at strategic points in your network will enable you to monitor by zone.

### Micro-leak

On a stationary installation, it only takes a few minutes to detect a drip.

### Prolonged flow

A tap left open and your application takes over and sends you a notification.

### Broken pipe

The My Water Manager system will only turn off the water where the leak is, whether you're in a meeting, with the family or travelling, and it will do so in real time. The rest of the installation will not be affected in any way.

### Frost protection

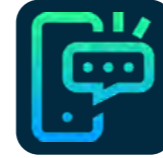
Receive a frost-free temperature alert.



## Eco-domotics of water

### My Water Manager allows you to :

- Manage and control your water points,
- Set a flow time,
- Set a water volume during a flow,
- Open and close water points remotely,
- Program time slots.



## Easy application in real time

- Available on iOS and Android
- This is the tool that will allow you to navigate all our sanitary installations.
- Monitor your consumption instantly and interact live with your installation
- Run your home automation scenarios
- Analyse your consumption data



## Starter-pack Dn 20

This is the basic solution for starting up your My Water Manager system. It consists of a Connectmanager box and 2 Aquamanager Dn20, the first for the water inlet and the second for the hot water outlet.

- AQUAMANAGER DN20 DESCRIPTION: SEE OPPOSITE COLUMN
- BOX DESCRIPTION: SEE OPPOSITE COLUMN
- APPLICATION DESCRIPTION: SEE OPPOSITE COLUMN

Reference : 14302825



## Aquaflow

This is a non-invasive temperature and flow sensor. It is installed directly on the pipe using a Rilsan collar clip.

- DESCRIPTION SENSOR:**
- Connexion Bluetooth
  - Bluetooth connection
  - 15 metre range between accessories and Connectblue box

- Electrical data:**
- Runs on Lithium battery
  - Battery life between 8 and 10 years

- Dimensions & weight:**
- (W/D/H) 65 mm / 20 mm / 35 mm
  - Weight 40g

Reference : 12102914



## AquaManager Dn20

**DESCRIPTION AQUAMANAGER DN20 :**  
The Aquamanager Dn20 system consists of modules connected to a box. This unit allows you to secure, control and manage your sanitary installation.

**AQUAMANAGER DN20 HAS THE FOLLOWING CHARACTERISTICS:**

- LoRa radio communication system
- 100-metre box/module range (theoretical)
- Mains connection to 230V single-phase socket
- 12-hour battery backup
- Real-time information on the application
- Automatic anti-tarte cycle

**Features and performance:**

- 3/4" free nut inlet and 3/4" male thread water outlet
- Covers Dn10 to Dn25
- The electromagnetic sensor has a low detection of 0.05 litres/minute and a maximum flow rate of 102 litres/minute.
- The module accepts an ambient temperature of 0 to 60°C and a water temperature of 2 to 80°C.

**Electrical data:**

- Single-phase 230V mains power supply
- IP65 class device

**Dimensions & weight:**

- (W/D/H) 240 mm by 160 mm by 49 mm.
- Weight 1,360 Kg
- Recycled cardboard packaging measures (W/D/H) 275 mm / 200 mm / 75 mm

Reference : 14302220



## AquaManager Dn40

**DESCRIPTION AQUAMANAGER DN40 :**  
The Aquamanager Dn40 system consists of modules connected to a box. This unit allows you to secure, control and manage your sanitary installation.

**AQUAMANAGER DN40 HAS THE FOLLOWING CHARACTERISTICS:**

- LoRa radio communication system
- 100-metre box/module range (theoretical)
- Mains connection to 230V single-phase socket
- 12-hour battery backup
- Real-time information on the application
- Automatic anti-tarte cycle

**Features and performance:**

- 1"1/2 free nut inlet and 1"1/2 male thread water outlet
- Covers Dn32 to Dn50
- The electromagnetic sensor has a low detection of 0.25 litres/minute and a maximum flow rate of 300 litres/minute.
- The module accepts an ambient temperature of 0 to 60°C and a water temperature of 2 to 80°C.

**Electrical data:**

- Single-phase 230V mains power supply.
- IP65 class device.

**Dimensions & weight:**

- (W/D/H) 354 mm / 185 mm / 87 mm.
- Weight 3.120 Kg
- Recycled cardboard packaging measures (W/D/H) 380 mm / 210 mm / 100 mm

Reference : 14302240



## Box My Water ConnectManager

- BOX DESCRIPTION:**
- LoRa radio communication with module
  - 100-metre range between box and module..

**Electrical data :**

- The power supply is 230V-50Hz mono.
- The box is 802.11.b/g/n/ac compliant.
- The box connects to the network via RJ45 or a local WiFi connection.

**Dimensions & weight:**

- (W/D/H) 187 mm / 184.5 mm / 37.8 mm
- Weight: 300 g
- Recycled cardboard packaging measures (W/D/H) 230 mm / 125 mm / 50 mm.

Reference : 11243314



## Conneblue Box

- BOX DESCRIPTION :**
- Bluetooth / Wifi connection
  - 15-metre range between accessories and Connectblue box

**Electrical data:**

- Runs on ER34615 battery
- Battery life 09 to 12 monthss

**Dimensions & weight:**

- (W/D/H) 70 mm / 70 mm / 40 mm
- Weight 196 g

Reference : 11241012

## TECHNICAL #CONNECTEDWATER



## The application

**AVAILABLE ON IOS AND ANDROID**

Our application will help you manage your consumption, control your installation and turn off the water in the event of even the slightest leak.

You can also access your water consumption in real time.

You'll be able to take action on your water consumption and save money, whether you're looking at it as a whole or at individual water points.

**Managing water consumption :**

- Energy management
- Thanks to direct knowledge of your consumption.
- Accurate information
- Monitoring at several points in your installation.
- Details over time
- Allows you to see changes in your usage.
- Identification
- Identify and replace high-consumption appliances.



Dn 65 to 800 modules available on request.



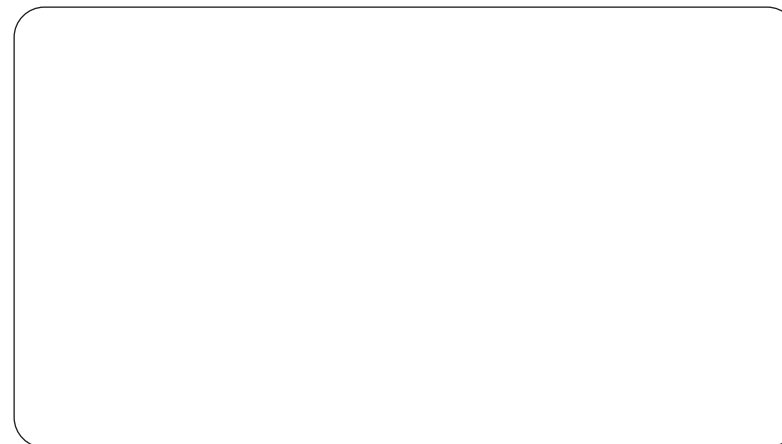
## If we all change our behaviour, the planet will thank us.

By becoming aware of our actions and adopting more environmentally-friendly behaviour, we can make a significant contribution to preserving the planet. Every gesture counts, whether it's managing our waste, promoting renewable energy or preserving biodiversity. Every effort we make will have a positive impact on the planet.

Let's stay mobilised and adopt virtuous behaviour together.



YOUR EXCLUSIVE RETAILER



© YOTCOMGO | Photos Freepik - Rendu 3rd Arabase - 2024



[my-water-manager.com](https://my-water-manager.com)

16 avenue de Sébastopol  
57070 METZ - France

+33 3 87 87 52 07

[info@my-water-manager.com](mailto:info@my-water-manager.com)

